

nomad

Lightweight and Portable Rapid Test Reader

Usage	Reader for lateral flow assays
Test Format	Dipstick tests
Results	Qualitative results analysis of up to 5 test lines per dipstick
Dimensions	41 mm x 41 mm x 40 mm (L x W x H)
Weight	40 g
Display	LCD; 14 segment display
User Interface	One-button control
Memory Capacity	Maximum 100 measurements results
Measuring Time	Ca. 3 seconds
Power Supply	3 batteries CR2032 (3V/230mAh) or via Nomad specific data cable (optional as accessory) for connection to you PC/Laptop
Interfaces	4-pol - 2,5mm jack socket for power supply (instead of batteries) and data transfer to PC/Laptop
Configuration	Kit-specific configuration via RFID technology
Ambiant Temperature (during usage)	10°C - 35°C
Ambiant Humidity (during usage)	20% - 85%
Storage Temperature	-30°C - 80°C
Storage Humidity	20% - 85%

For More Information



+32 4 252 66 02



info@unisensor.be



www.unisensor.be

nomad

A Laboratory In Your Pocket



Safer milk
from farm
to dairy factory



nomad

© 2017 - Unisensor • All rights reserved

unisensor
DIAGNOSTIC ENGINEERING

Why Nomad ?



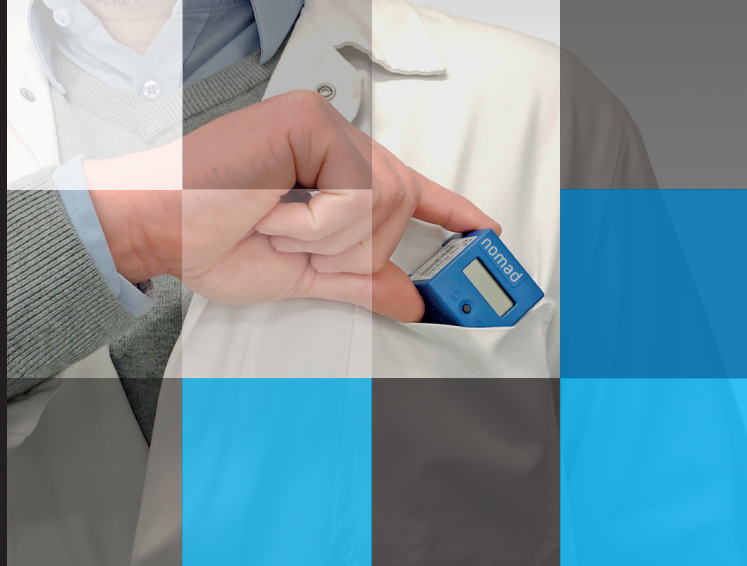
SMALL
(4 x 4 x 4 cm)



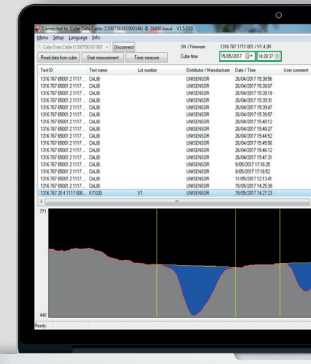
LIGHT
(40 g)



FAST
(3 seconds)



The internal memory can store 100 results. All data can be transferred easily to a PC via a NOMAD specific USB cable. The NOMAD software allows a clear data presentation and remote measurements.



What is Nomad ?

Unisensor's NOMAD rapid test reader offers an optimal tool for the qualitative analysis of Unisensor's dipstick tests in a small cube of only 4 cm sides.

It delivers fast and accurate results and is a cost-effective solution for any field practice. By operating with only a single button this device is especially user-friendly. Use it on a truck or in the field. Wherever you need it!

No maintenance is required. The stored data can be easily transferred to a PC via a special USB cable.

Now available for the following kits



TwinSensor
KIT020



BetaXpress
KIT044



TriSensor
KIT035

How To Use Nomad



By pressing the button, you will be presented with the start screen.



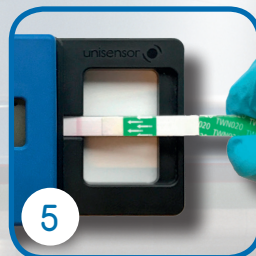
The nomad withhold the last reading method used. To perform a new reading, press the button again. If you want to change to another kit reference, place the RFID card on top of the NOMAD.



[OPTIONAL] Place the proper RFID card on the NOMAD.



Press the button more than 1 second if you want to check the reading method.



Insert the test and press the button again. Please, refer to the Instruction For Use for detailed information regarding the dipstick test procedure.



The measurement is processed.



After approximately 3 seconds the qualitative results will scroll through the screen. The Nomad turns off automatically after 50 seconds.

**Make sure
your milk is
antibiotic
FREE !**