

Other Top Products include:

Human Astrocytes (Cat. #1800)

Human Pulmonary Alveolar Epithelial Cells (Cat. #3200)

Mouse Astrocytes from CD1 (Cat. #M1800)

Rat Brain Microvascular Endothelial Cells (Cat. #R1000)

Mesenchymal Stem Cell Medium (Cat. #7501)

Astrocyte Conditioned Medium (Cat. #1811)

Alcian Blue Staining Kit (Cat. #8378)

Poly-L-Lysine, 10 mg/ml (Cat. #0413)

0.2% Gelatin Solution, 100 ml (Cat. #423)

We specialize in:

Primary Cells

Cell Culture Media

Stem Cells

Reagents

Gene Expression Analysis

Molecular Biology

Cell Based Assays

Growth Factors



CONTACT US

1610 Faraday Ave
Carlsbad, CA 92008
P: 877.602.8549
F: 760.602.8575

info@sciencellonline.com
www.sciencellonline.com



**THE #1 PROVIDER OF
PRIMARY CELLS IN
THE WORLD.**

#MB891

#RX7048

IVD

Emergency Use Authorization

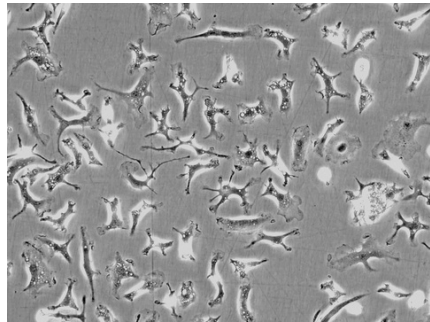
Our Top Products

Endothelial Cell Medium (Cat. #1001)

Human Neurons (Cat. #1520)



Mouse Microglia from C57BL/6 (Cat. #M1900-57)



Absolute Human Telomere Length Quantification qPCR Assay Kit (Cat. #8918)



#RX7038

IVD

Emergency Use Authorization



#RU7038

For Research Use Only




SARS-CoV-2 PRODUCTS

We were 1 of the only 32 labs in the U.S. granted EUA from the FDA.

To aid in the global efforts for research and identification of the SARS-CoV-2, ScienCell developed a coronavirus detection kit (Cat #RX7038) by RT-qPCR. Importantly, our kit follows the latest CDC guidelines for detection of SARS-CoV-2. Included in the kit are:

- Two primer/probe sets (Cat #RX7038-N1 and RX7038-N2)
- A Human RPP30 gene primer/probe set (Cat #RX7038-RP)
- A positive control (Cat #7038-Pos)