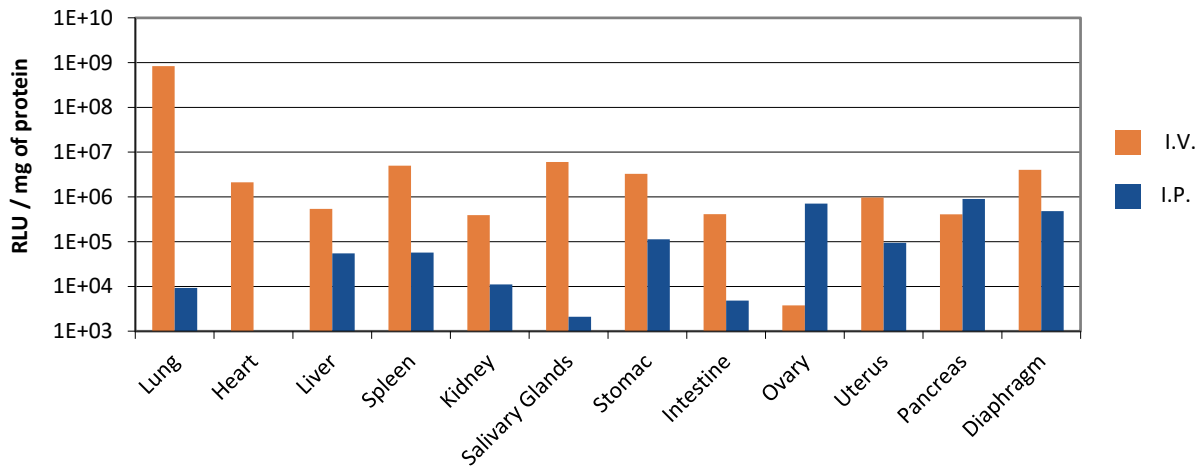


in vivo transfection

in vivo-jetPEI®

- ⊕ **Polyvalent:** *in vivo* delivery of DNA, si/sh/miRNA in any animal model
- ⊕ **Easy to use:** two-step protocol
- ⊕ **Renowned:** Most advanced *in vivo* transfection technology with over 700 peer-reviewed publications
- ⊕ **Successful:** Used from fundamental research to Human clinical trials

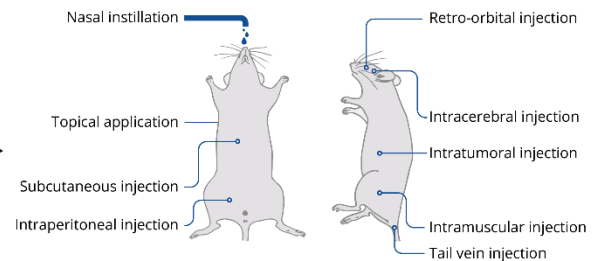
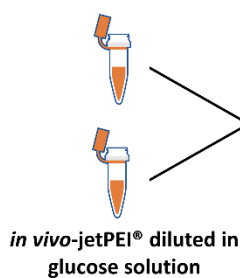
in vivo-jetPEI® can be used in a wide range of organs:



Complexes were formed following standard protocols.

Easy-to-use 2 steps protocol:

Nucleic acid diluted in glucose solution



Injection in animal model with any administration route



Product	Ref N°	Reagent size	Amount of 10% glucose solution
<i>in vivo</i> -jetPEI®	201-10G	0.1 mL	10 mL
	201-50G	0.5 mL	2 x 10 mL

Bulk quantities and GMP grade reagent are available upon request.