

# No More Western Blotting!

## New Cell-Based Phospho-Protein ELISA Kits

### SIMPLE

Detect relative levels of phosphorylated proteins using qualitative cell-based ELISA technology

### FLEXIBLE

Use adherent cells to detect phosphorylated proteins in a 96-well format

### RAPID SCREENING

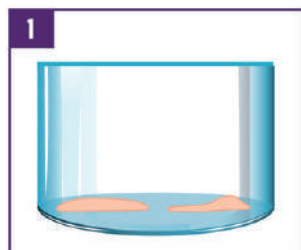
Screen kinase and phosphatase inhibitors/activators rapidly in a 96-well format

### SPECIFIC

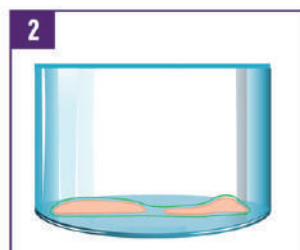
Kits use highly validated antibodies available separately for further studies



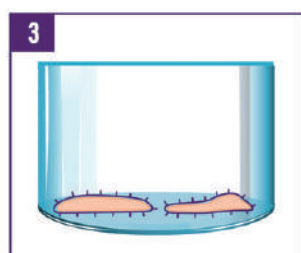
## Simple Protocol



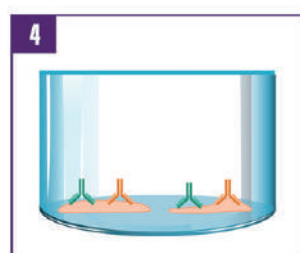
Add cells



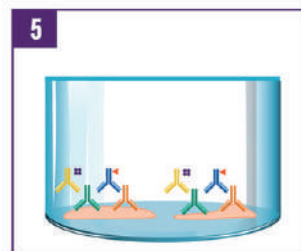
Treat with inhibitors or activators



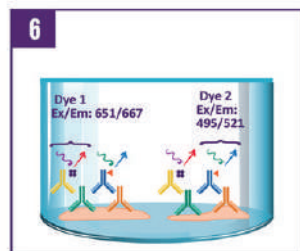
Quench, fix, and block



Add  $\alpha$ -Target Primary Antibody and  $\alpha$ -GAPDH Primary Antibody



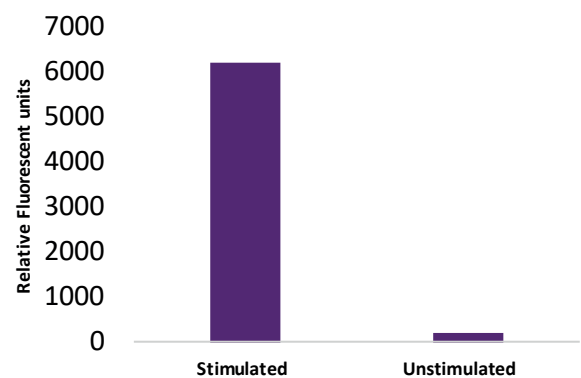
Add Dye 1 and 2-conjugated Secondary Antibodies



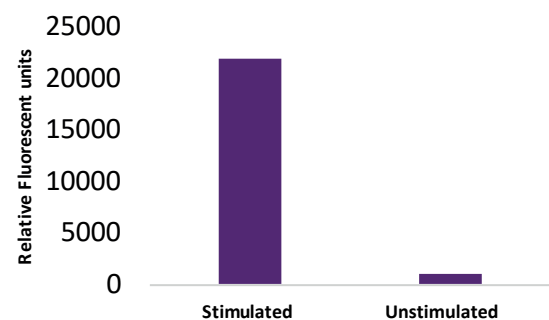
Read plate via fluorometer at Ex/Em 651/667 (Dye 1) and 495/521 (Dye 2)

## Great Data

### EGFR (Phospho-Thr693) Cell-Based ELISA



### Tau (Phospho-Ser214) Cell-Based ELISA



# Cell-Based ELISA Kits

## Key Phospho-protein Cell-Based ELISA Kits

Phospho ATF	Phospho-CDC2	Phospho-Integrin Beta 1, 3, 4	Phospho-p62
Phospho AKT	Phospho-CDC25	Phospho-IFN $\gamma$ Receptor	Phospho-p63
Phospho-14-3-3 Beta/Zeta	Phospho-CHK1 & 2	Phospho-IRAK1	Phospho-p70
Phospho-4E-BP1	Phospho-Beta Catenin	Phospho-IRF3	Phospho-p95
Phospho-ABL1	Phospho-C-Jun	Phospho-IRS1	Phospho-PAK1, 2 & 3
Phospho-Akt1	Phospho-Claudin 3, 6, 7	Phospho-JAK1, 2, 3	Phospho-PIM1
Phospho-AKT1/3	Phospho-C-RAF	Phospho-JNK1/2/3	Phospho-PKC alpha & delta
Phospho-Akt2	Phospho-CREB	Phospho-Keratin 8 & 18	Phospho-PKC Theta & Zeta
Phospho-AML1	Phospho-Cyclin B1, D1 & H	Phospho-Ku70 & Ku80	Phospho-PLCG1 & 2
Phospho-AMPK alpha	Phospho-EGFR	Phospho-Lamin A/C	Phospho-PR
Phospho-Amyloid Beta A4	Phospho-EIF4B	Phospho-MAP2K7	Phospho-PPAR $\gamma$
Phospho-Androgen Receptor	Phospho-Ephrin	Phospho-MAP3K7	Phospho-PTEN
Phospho-ATF1	Phospho-Era	Phospho-MAPKAPK2	Phospho-RAD17, 51 & 52
Phospho-ATF2	Phospho-ETK	Phospho-MAPKAPK5	Phospho-RB
Phospho-AurA	Phospho-FLT3	Phospho-MDM2	Phospho-S6
Phospho-AurB	Phospho-FOXO1 & 4	Phospho-MEK1 & 2	Phospho-SHC
Phospho-BAD	Phospho-GAB1 & 2	Phospho-Met	Phospho-SMAD1, 2 & 3
Phospho-BCL-2	Phospho-GATA1 & 4	Phospho-MKK3 & 6	Phospho-SRC
Phospho-BCL-XL	Phospho-GluR1, 2 & 4	Phospho-MSK1 & 2	Phospho-STAT1, 2 & 3
Phospho-B-Raf	Phospho-GR	Phospho-mTOR	Phospho-STAT4, 5 & 6
Phospho-BRCA1	Phospho-GSK3	Phospho-MYB	Phospho-SYK
Phospho-CaMK1- alpha	Phospho-HDAC1, 2, 3, 4, 6, 7, 8	Phospho-MYC	Phospho-Tau
Phospho-Casein Kinase I alpha	Phospho-HER2 & 3	Phospho-NFAT3 & 4	Phospho-TERF1
Phospho-Caspase 1, 3, 6, 8 & 9	Phospho-Histone H1 & H3	Phospho-NF-kB p65	Phospho-Telomerase
Phospho-Catenin-Beta	Phospho-Histone H2AX	Phospho-NF-kB p105	Phospho-TNNI3
Phospho-CD3	Phospho-HSP27 & 90B	Phospho-NPM	Phospho-TOP2A
Phospho-CD19	Phospho-ICAM1	Phospho-p21	Phospho-Trk A & B
Phospho-CD32	Phospho-IGF1R	Phospho-p27	Phospho-VASP1
Phospho-CD40	Phospho-IKBa & IKBb	Phospho-p38 MAPK	Phospho-VEGFR2
Phospho-CD50	Phospho-IKKa, b, g	Phospho-p44 MAPK	Phospho-WNK1
Phospho-CD71	Phospho-IL2R & IL3R	Phospho-p53	Phospho-ZAP70
Phospho-CD16	Phospho-IL4R & IL7R	Phospho-p57	Phospho-PI3K p85a