

No More Western Blotting!

700+ Cell-Based ELISA Kits

SIMPLE

Detect relative levels of cellular proteins using qualitative cell-based ELISA technology

FLEXIBLE

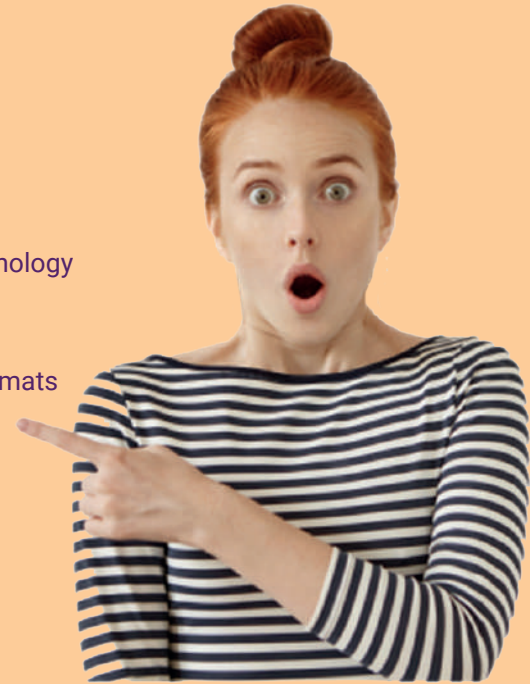
Use adherent cells to detect proteins with fluorometric or colorimetric in-cell formats

RAPID SCREENING

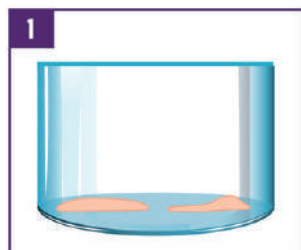
Screen protein levels rapidly and directly in cultured cells

SPECIFIC

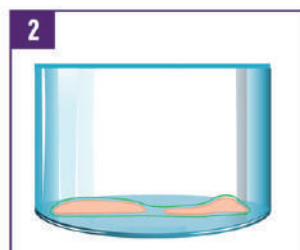
Kits use highly validated antibodies available separately for further studies



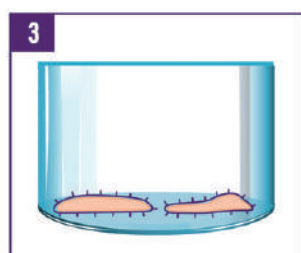
Simple Protocol



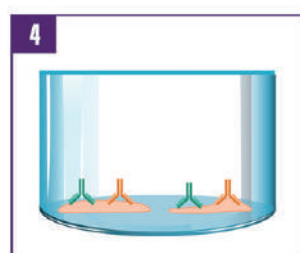
1 Add cells



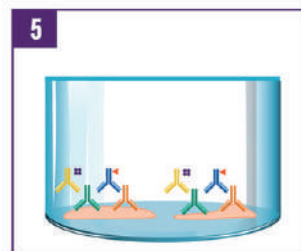
2 Treat with inhibitors or activators



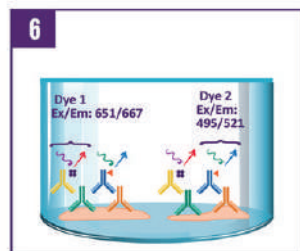
3 Quench, fix, and block



4 Add α -Target Primary Antibody and α -GAPDH Primary Antibody



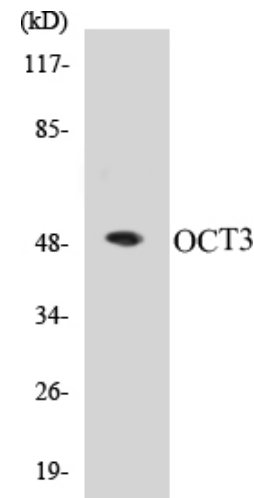
5 Add Dye 1 and 2-conjugated Secondary Antibodies



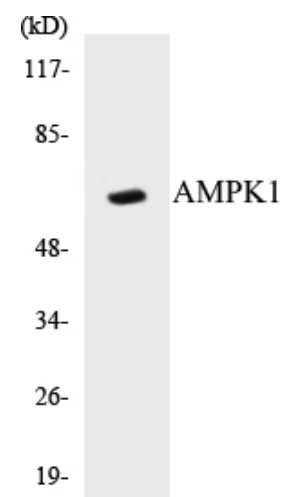
6 Read plate via fluorometer at Ex/Em 651/667 (Dye 1) and 495/521 (Dye 2)

Validated Components

OCT3 Validated Antibody



AMPK1 Validated Antibody



Cell-Based ELISA Kits

Cell-Based ELISA Top Targets		
BCL-2	Claudin 1-11	DDX3
Bcl-6	Collagen I alpha2	DLX3
BCL-XL	Collagen IV alpha2	DLX4
BAD	Collagen IV	DLX5
BAK	Collagen V alpha1	DMPK
BAX	Collagen VI alpha2	DNA Pol alpha
C/EBPa	Collagen XI alpha1	DNA Pol Beta
CAMK1,2, 4, 6	Collagen XX alpha1	DNA-PK
Caspase 1-10	C-RAF	E-cadherin
Calcium Sensing Receptor	CREB	EDD
Beta Catenin	CREB-BP	eEF2
CD147	Cyclin A, B, D	eEF2K
CD19	Cyclin E, G, H, L	EFNA3, 4, 5
CD226	CYP C	EFNB1, 3
CD253	CYP P450 17A1	EGFR
CD3 Zeta	CYP P450 21A2	EGR1/2
CD32	CYP P450 24A1	eIF2 alpha
CD40	CYP P450 26A1	eIF4B
CD5	CYP P450 27A1	Elk1
CDK1/CDC2	CYP P450 2B6	EPHA1
CDK10	CYP P450 2C19	EPHA2/3/4
CDK2	CYP P450 2C8/9/18/19	EPHA5
CDK5	CYP P450 2D6	EPHA7
CDK5R1	CYP P450 2J2	EPHB1/2
CDK5R2	CYP P450 2R1	EPHB1/2/3/4
CDK7	CYP P450 2S1	EPHB2
CDK8	CYP P450 2U1	EPHB6
CDKL1	CYP P450 39A1	ERCC1
CDKL4	CYP P450 3A4/5	ERCC5
CDKN3	CYP P450 3A43	ERK3
CEBPB	CYP P450 3A7	ERK8
Chk1	CYP P450 4B1	ES8L1
Chk2	CYP P450 7B1	ER-alpha
c-Jun	Daxx	ER-Beta
CKI-a, g, b	DDR1	FADD

Cell-Based ELISA Kits

Cell-Based ELISA Top Targets		
FAK	hnRNP C, H, K	LIMK1/2
FADKD1, 3	hnRNP M, Q	MAP2K6
FAS & FASL	HOXA1	MAP2K7
FGFR1, 2, 3	HOXA7	MAP3K7
FKHR	HOXB9	MAP3K8
FKHRL1	HOXD12	MAP3KL4
FLI1	HSP10	MAP4K6
FLT3	HSP27	MAPK3
Fos	HSP40	MAPKAPK2
FosB	HSP90B	MAPKAPK5
FOXB1/2	ICAM-1	MARCKS
FOXE3	IGF1R	MARK3
FOXJ1	IGFBP-3	MCM2
FOXK1	IkB alpha	MCM4
FOXL1	IKK a, b, g	MCM5
FOXN2	IL-2Ra & IL-2Rb	MDM2
FOXO1A	IL-3Rb	MDM4
FOXO4	IL-4R/CD124	MED1
GABA-B Receptor	ITGB1, 3, 4	MED26
GATA1, 4, 6	IFNgRa	MEF2A
GluR1	IRF2, 3, 4	MEF2B
GluR2	IRS-1	MEK1
GluR4	JAK2, 3	MEK1/2
GluR5	JNK1/2/3	MEK2
GLUT1	JunD	MELK
GLUT3	K6PP	MVK
GRK1, 2, 3, 5, 7	KAP0	mGluR2/3
GSK3a, b	KAP1	mGluR4
HDAC1 -10	Keratin 5, 8, 10, 14	mGluR6
HER2	Keratin 15-20	mGluR7
HER3	Ku70/80	mGluR8
HEXB	Ku70/XRCC6	MMP1, 2, 3
Hexokinase-3	Ku80/XRCC5	MMP7, 8, 9
Histone H1, H3, H4	Lamin A/C	MMP11-16
Histone H2AX	LIMK1	MMP19 & 23

Cell-Based ELISA Kits

Cell-Based ELISA | Top Targets

MSK1	p50 Dynamitin	SHP-1, 2	TSPAN8
MSK2	p53	Smad1, 2, 3, 4	TTC23
Mst1/2	p56 Dok-2	Smad1/5/9	Tuberin/TSC2
MTA1	p57 Kip2	SOX6, 9	Tubulin alpha
Mtor	p62 Dok	SOX8/9/17/18	Tubulin Beta
MtSSB	p63	SREBP-1	Tubulin gamma
Musculin	p70 S6 Kinase Beta	SRF	TUSC2
MYB	p70 S6 Kinase	SRY	TUSC3
MYC	p73	STAT1, 2, 3, 4, 5	Tyrosinase
NBL1	p90 RSK	Sumo1	UBE1L
NCBP1	p95-NBS1	Synuclein	VE-Cadherin
NCBP2	PAK1, 2, 3	TAF1A, 4, 5L	VEGFB
NCoR1	Pax-5	Tau	VEGFR2
NDF2	PDCD4	TBX1, 10, 15/18	Vimentin
NEDD8	PDE4D	TGF alpha	VDR
NEK9	PDGFB	TGF Beta RII	XIAP
NFAT3	PDGFR alpha	TGF Beta1	XRCC1
NFAT4	PDGFRBeta	TGF Beta3	XRCC4
NF-kB p100/p52	PIAS1, 3, 4	TIMP2	XRCC6
NF-kB p105/p50	PIM-1	TIMP3	ZNF134
NF-kB p65	PKC a, b, d, t, z	TIMP4	ZNF147
nNOS	PKD1/2/3	TIP60	ZNF174
NR4A1	PLCG1, 2	TNFRSF9	ZNF187
OCT-1	PPAR-gamma	TNFSF11	ZNF24
OCT-2	PR	TNFSF15	ZNF265
OCT-3	PAR-4	TNFSF9	ZNF397
Opioid Receptor	PSA	TNNI3	ZNF596
Opioid Receptor-Delta	PSEN1	TRIM24	ZNF638
Osteopontin	PTEN	TRIM3	ZNF668
p300	RAD17	TRIM38	ZNF785
p300/CBP	RAD51	TRIM59	
p38 MAPK	RAD52	TRIP13	
p42 MAPK	RAR beta	Trk A	
p44/42 MAP Kinase	RXR gamma	Trk B	
p47 phox	SENP1, 2, 5, 7, 8	Uba2	